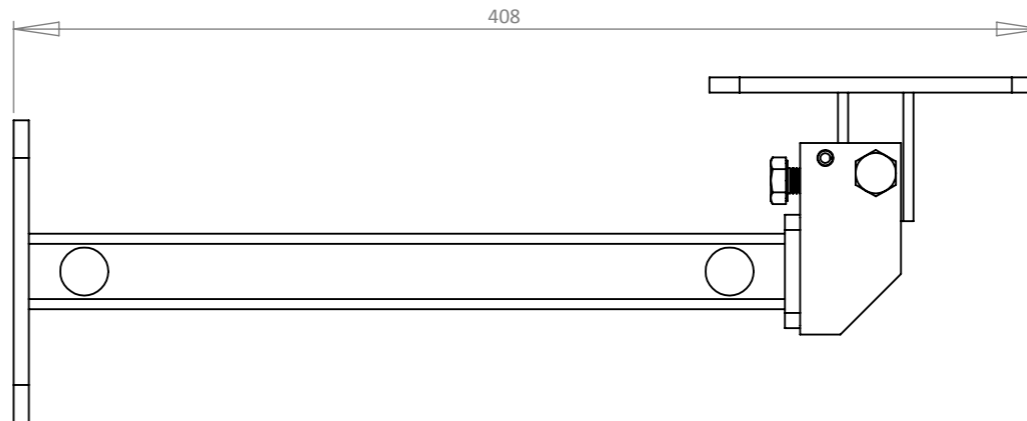
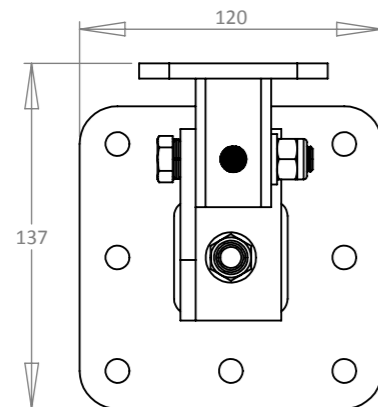
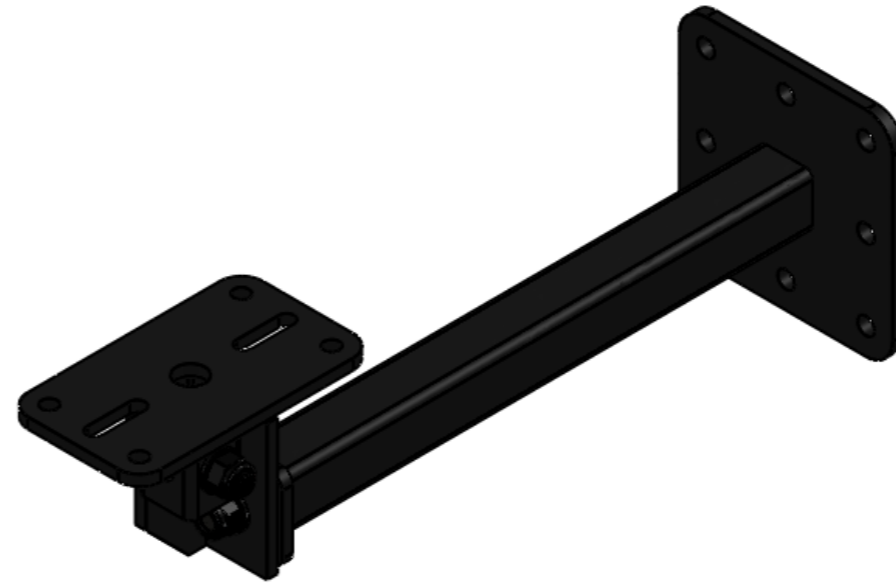
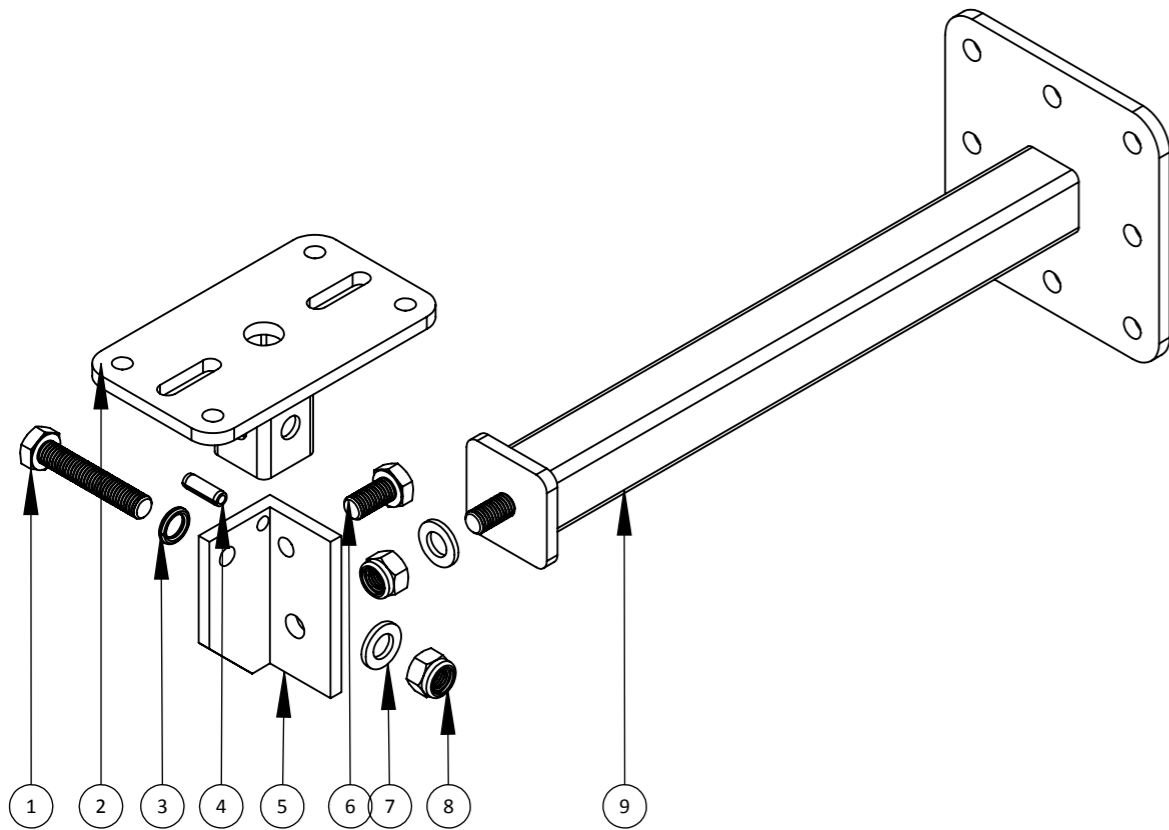


IF IN DOUBT ASK



DEBUR AND BREAK SHARP EDGES DO NOT SCALE DRAWING

UNLESS OTHERWISE SPECIFIED:
DIMENSIONS ARE IN MILLIMETRES
TOLERANCES:
LINEAR: xx
ANGULAR: xx

TITLE: CMFB75-B

MATERIAL: AS SHOWN

PART NO: CMFB75-B

FINISH: AS SHOWN

Sheet 1 of 1

WEIGHT: 287.12

SCALE: 1:3

A3

	NAME	SIGNED	DATE
DRAWN			
CHK'D			
APPV'D			

Comments:



All rights reserved. This drawing and all information contained herein is the property of Powerdrive Drum Company Ltd and as such may not be copied or reproduced, in whole or in part, without prior written agreement.

PART NO.	ITEM NO.	DESCRIPTION	QTY.
7031-354	1	Set Screw M10 x 55mm Hex Head B361	1
3011-204	2	Plate Type 75 Welded To 30mm Sq x 2.5mm M1230	1
1050-703		Plate 75 Type M815	1
2040-704		Pillar Tilter 30mm Sq x 2.5mm M519	1
7041-302	3	Washer M10 Spring Sq Section B202	1
7021-005	4	Pin 0.25" Dia x 0.75" Spring B155	1
1001-201	5	Angle Unit MD Inverted M1024B	1
7031-349	6	Set Screw M10 x 20mm Hex Head B149	1
7041-300	7	Washer M10 B346	2
7011-302	8	Nut M10 Nylon Thin Type B347	2
3001-100	9	Plate Ceiling Welded to Drop Tube C120	1
1050-204		Plate Ceiling 120mm Sq 0.75" Hole	1
1020-221		Box Section 300mm	1
1050-002		Plate Blanking 45mm Sq x 6mm M1125	1
7031-350		Set Screw M10 x 25mm Hex Head B343	1